

URA-AKSELIT JA -HOLKIT

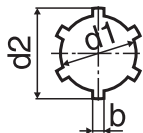
Ura-akselit

Profiili

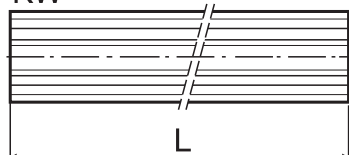
ISO 14, vedetty

Materiaali

Teräs SS-ENT083-1-2C45 (C45)



KW



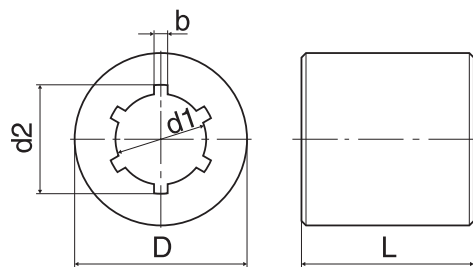
DIN 5463

Laji	Kilojen lkm	d1	d2	b	D	L
KW 11-0500	6	11	14	3	-	500
KW 11-1000	6	11	14	3	-	1000
KW 13-0500	6	13	16	3,5	-	500
KW 13-1000	6	13	16	3,5	-	1000
KW 16-0500	6	16	20	4	-	500
KW 16-1000	6	16	20	4	-	1000
KW 18-0500	6	18	22	5	-	500
KW 18-1000	6	18	22	5	-	1000
KW 21-0500	6	21	25	5	-	500
KW 21-1000	6	21	25	5	-	1000
KW 23-0500	6	23	28	6	-	500
KW 23-1000	6	23	28	6	-	1000
KW 26-0500	6	26	32	6	-	500
KW 26-1000	6	26	32	6	-	1000
KW 28-0500	6	28	34	7	-	500
KW 28-1000	6	28	34	7	-	1000
KW 29-0500	6	29	35	8,6	-	500
KW 29-1000	6	29	35	8,6	-	1000
KW 32-0500	8	32	38	6	-	500
KW 32-1000	8	32	38	6	-	1000
KW 36-0500	8	36	42	7	-	500
KW 36-1000	8	36	42	7	-	1000
KW 42-0500	8	42	48	8	-	500
KW 42-1000	8	42	48	8	-	1000

Materiaali

Teräs SS-EN 10025-E295 (St 50-2)

Uraholkit



Laji	Urien lkm	d1 H7	d2 H11	b F ₉	D h ₉	L
ZM 11	6	11	14	3	28	22
ZM 13	6	13	16	3,5	32	26
ZM 16	6	16	20	4	38	32
ZM 18	6	18	22	5	40	36
ZM 21	6	21	25	5	45	42
ZM 23	6	23	28	6	50	46
ZM 26	6	26	32	6	55	52
ZM 28	6	28	34	7	60	54
ZM 29	6	29,6	34,9	8,71	50	80
ZM 32	8	32	38	6	65	59
ZM 36	8	36	42	7	70	64
ZM 42	8	42	48	8	75	69