

# SPLINESAXLAR - MUFFAR

## Splinesaxlar

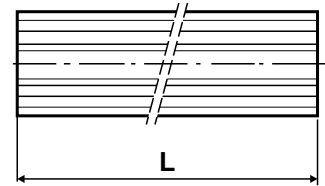
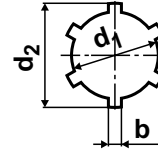
Heldragna

Material

Stål SS EN 10277-2

Profil

ISO 14, DIN 5463



Artikelnr	Antal splines	d <sub>1</sub>	d <sub>2</sub>	b	L
KW110500	6	11	14,0	3,0	500
KW111000	6	11	14,0	3,0	1000
KW130500	6	13	16,0	3,5	500
KW131000	6	13	16,0	3,5	1000
KW160500	6	16	20,0	4,0	500
KW161000	6	16	20,0	4,0	1000
KW180500	6	18	22,0	5,0	500
KW181000	6	18	22,0	5,0	1000
KW210500	6	21	25,0	5,0	500
KW211000	6	21	25,0	5,0	1000
KW230500	6	23	28,0	6,0	500
KW231000	6	23	28,0	6,0	1000
KW260500	6	26	32,0	6,0	500
KW261000	6	26	32,0	6,0	1000
KW280500	6	28	34,0	7,0	500
KW281000	6	28	34,0	7,0	1000
KW290500	6	29	34,9	8,6	500
KW291000	6	29	34,9	8,6	1000
KW320500	8	32	38,0	6,0	500
KW321000	8	32	38,0	6,0	1000
KW360500	8	36	42,0	7,0	500
KW361000	8	36	42,0	7,0	1000
KW420500	8	42	48,0	8,0	500
KW421000	8	42	48,0	8,0	1000
KW460500	8	46	54,0	9,0	500
KW461000	8	46	54,0	9,0	1000

Rostfritt på förfrågan.

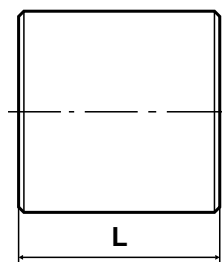
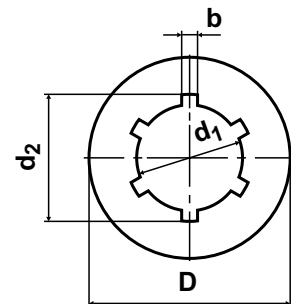
## Muffar

Frästa

Material

Stål SS 2136

ISO 14, DIN 9611



Artikelnr	Antal splines	d <sub>1</sub> H7	d <sub>2</sub> H11	b F9	D h9	L
ZM11	6	11,0	14,0	3,00	28	22
ZM13	6	13,0	16,0	3,50	32	26
ZM16	6	16,0	20,0	4,00	38	32
ZM18	6	18,0	22,0	5,00	40	36
ZM21	6	21,0	25,0	5,00	45	42
ZM23	6	23,0	28,0	6,00	50	46
ZM26	6	26,0	32,0	6,00	55	52
ZM28	6	28,0	34,0	7,00	60	54
ZM29	6	29,6	34,9	8,71	50	80
ZM32	8	32,0	38,0	6,00	65	59
ZM36	8	36,0	42,0	7,00	70	64
ZM42	8	42,0	48,0	8,00	75	69
ZM46	8	46,0	54,0	9,00	80	90

Rostfritt på förfrågan.