

Linear actuator Picolo 0



*Our innovative design model
for façades - with flexible
mounting options*



Linear actuators Picolo 0



Description · Applications

Picolo 0 for the latest demands of architects and façade designers

elero's space-saving linear actuator with innovative design for the adjustment of photovoltaic louvres and large louvres made of glass, aluminium or stainless steel for commercial architecture.

Picolo 0 is weather-resistant

With its waterproof housing and its anodised aluminium fasteners, Picolo 0 is an optimum solution for façade applications.

Picolo 0's aesthetic design with flexible mounting options

With its particularly slim construction, Picolo 0 can easily be integrated into a variety of modern façade styles. The flexible mounting position offers numerous application possibilities, no matter if the piston rod is installed horizontally or facing upwards.

So, if you want to have a powerful linear actuator that can be integrated harmoniously into the aesthetics of an ambitious façade design, Picolo 0 is exactly what you need!

Picolo 0 offers many more advantages

- Thanks to the weather-resistant construction, the mounting position is flexible
- Integrated limit switches
- Easy control
- Low-noise operation
- UV-resistant connecting cables
- Central cable outlet

The linear actuator for louvre adjustments in commercial architecture

The technology

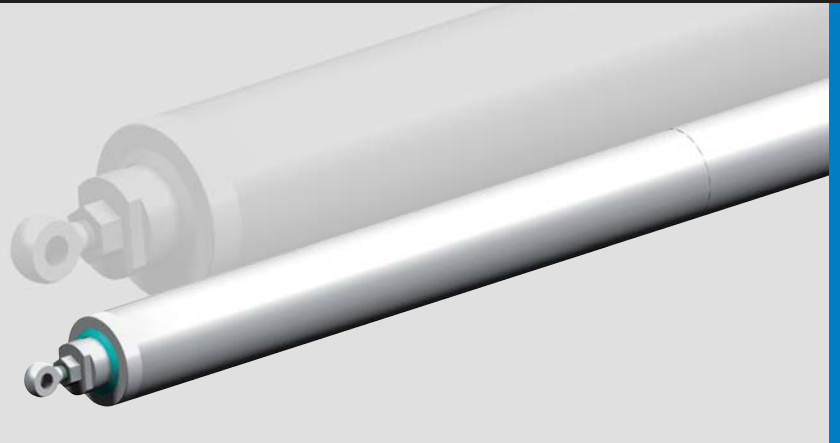
elero's "Picolo 0" linear actuator is an electromechanical push rod drive in which a rotational movement is transformed into a linear movement by gear units and a work gear spindle. The motor, a direct current motor, is particularly robust and its speed is constant even if the load differs. Through the slim and cylindrical actuator design, technical and functional aspects as well as optical and aesthetic aspects have been taken into account.



- Protection against solar heat
- Well-lit rooms through controlled daylighting
- Interior glare protection
- Optimum lighting conditions for PC work environments
- Unhindered views to the outside
- Integration of photovoltaic panels to take advantage of solar energy.

An indispensable part of any sun protection system is the right actuator system !

Convincing technology for flexible mounting options



Facts • Options • Accessories • Applications

The facts

	Picolo 0	
Load (N)	100 – 1800	
Stroke speed (mm/s)	2 – 16	
Rating	7 min	
Stroke length (mm)	75 – 400 for lug – lug fastening 600 – 800 for pivot attachment	
Operating voltage	12V DC / 24V DC	
Temperature range	- 20 °C to + 80 °C	
Protection class	IP 54	IP 67
Application	indoors	outdoors
Housing	aluminium	anodised aluminium
Cable length (m)	2	

Options

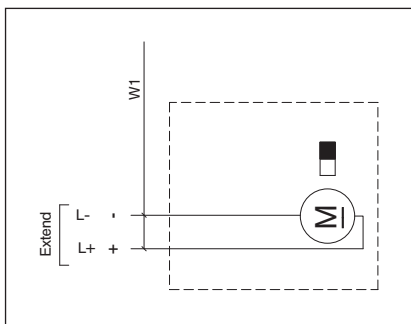
- Internal power cut-off
- Encoder
- Synchronisation control / external power cut-off
- RAL colour coating

Accessories

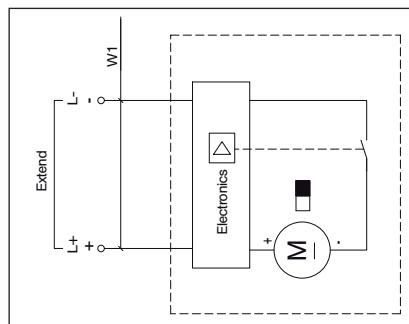
- Adjustable pivot

Applications

- Façade architecture
- Adjustment of louvres and photovoltaic panels



Standard wiring diagram GS9801



Standard wiring diagram GS9311*

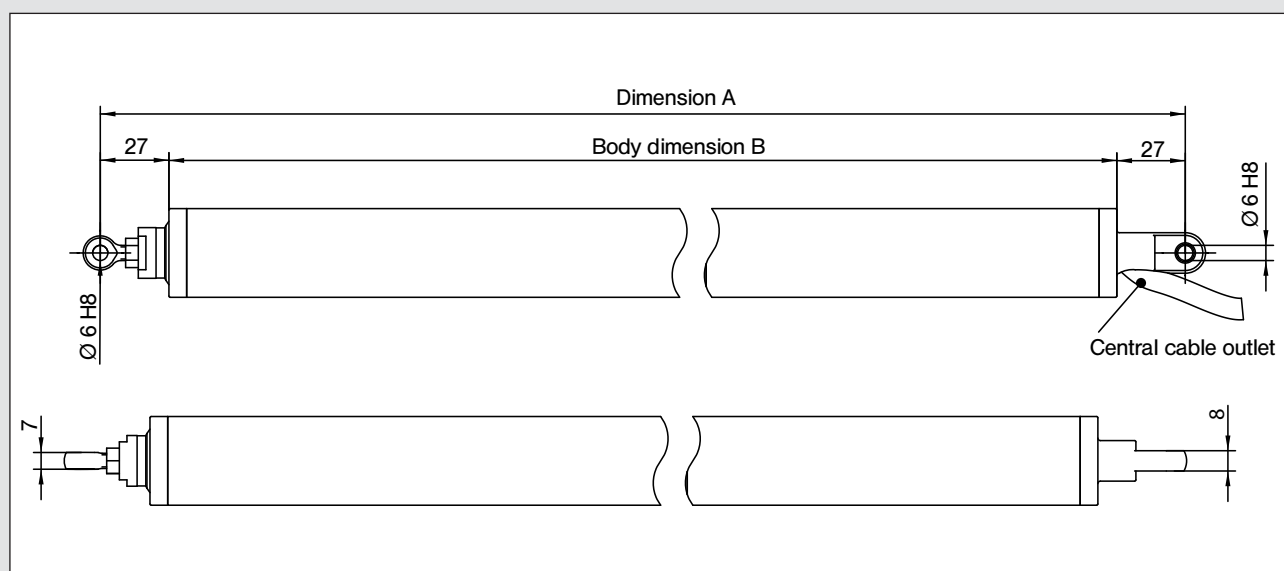
* with the option: internal power cut-off

Load (N) and stroke speeds (mm/s)

Version	Load (N)	Stroke speed (mm/s)
A	100	16
B	400	9
C	900	4.5
D	1800	2

elero linear actuators

Technical data and dimensions



Dimension chart

Stroke	Dimension A (mm)	Dimension B / body dimension (mm)
75	385	332
100	411	357
150	461	397
200	511	457
250	561	507
300	611	557
400	711	657
600 *	950	896
800 *	1150	1096

* The maximum load for the Picolo 0 is 1000 N when this stroke is selected.

Attention!

The stated dimensions refer to with the standard version lug – lug fastening. Dimensions will change if different fasteners are selected.

elero GmbH

Linearantriebstechnik

Nassaeckerstrasse 11

D-07381 Poeszneck

Phone +49 (0) 3647 / 46 07-0

Fax Reception +49 (0) 3647 / 46 07-40

Fax Purchasing department -41

Fax Sales department -42

Head office:

Linsenhofer Str. 59-63

D-72660 Beuren

Phone +49 (0) 70 25 / 13-02

Fax Reception +49 (0) 70 25 / 13-212

info@elero-linear.de

www.elero-linear.com