

# Linear actuator Picolo XL



*Our flexible  
design model  
for façades*



# Linear actuators Picolo XL



## Description · Applications

### Picolo XL for the latest demands of architects and façade designers

elero's space-saving linear actuator with innovative design for the adjustment of photovoltaic louvers and large louvers made of glass, aluminium or stainless steel for commercial architecture.

### Picolo XL is made of stainless steel

With its weather-resistant exterior and fasteners, Picolo XL is an optimum solution for façade applications.

### Picolo XL's aesthetic design

With its particularly slim construction, Picolo XL can easily be integrated into a variety of modern façade styles.

The flexible mounting position offers numerous application possibilities, no matter if the piston rod is installed horizontally or facing upwards.

So, if you want to have a powerful linear actuator that can be integrated harmoniously into the aesthetics of an ambitious façade design, Picolo XL is exactly what you need!

### Picolo XL has a lot more advantages to offer

- Thanks to the weather-resistant construction, the mounting position is flexible
- Integrated, easily adjustable limit switches
- Torsion lock piston
- Easy control
- Low-noise operation
- UV resistant cables

For the 230 V AC model:

- Integrated capacitor
- Precise positioning by degrees

### The linear actuator for louver adjustments in commercial architecture

#### The technology

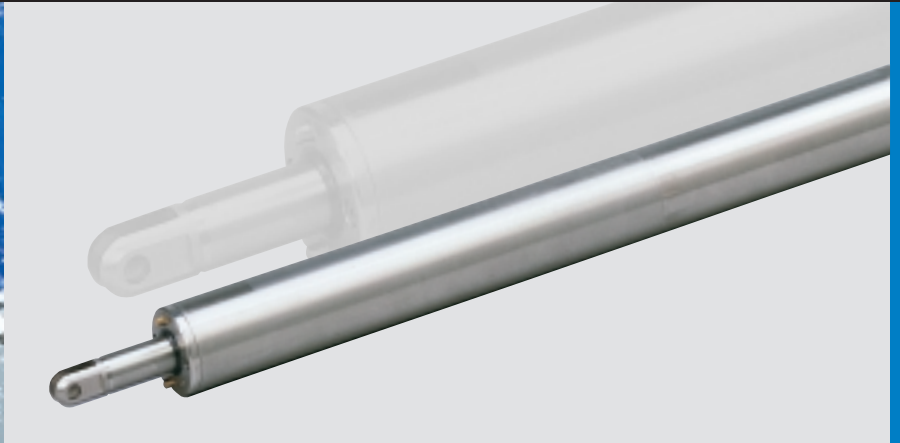
elero's "Picolo XL" linear actuator is an electromechanical push rod drive in which a rotational movement is transformed into a linear movement by gear units and a work gear spindle. The motor, an asynchronous motor, is particularly robust and its speed is constant even if the load differs. Through the slim and cylindrical actuator design, technical and functional aspects as well as optical and aesthetic aspects have been taken into account.



- Protection against solar heat
- Well-lit rooms through controlled daylighting
- Interior glare protection
- Optimum lighting conditions for PC work environments
- Unhindered views to the outside
- Integration of photovoltaic panels to take advantage of solar energy

An indispensable part of any sun protection system is the right actuator system !

# Our weather-resistant models with flexible mounting positions



## Description · Options

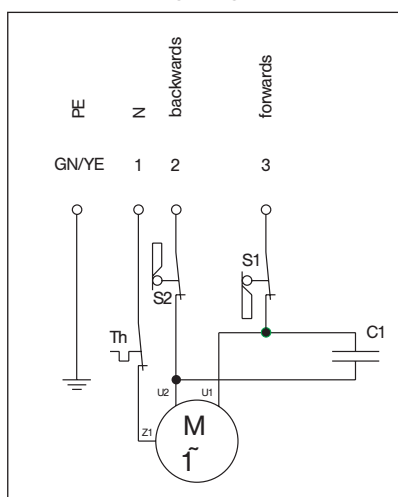
### The facts

	Piccolo XL	Piccolo XL
Operating voltage	<b>230V 1AC 50Hz</b>	<b>24V DC</b>
Housing diameter (mm)	48	
Load (N)	1,200	
Stroke lengths (mm)	100, 200, 300, 400, 500, 600	
Stroke speed (mm/s)	6	5
Rating	5 min	S3 / 15%
Temperature range (°C)	-20 to +80	
Cable length (m)	2	
Housing + fasteners	stainless steel 4301	
Mounting position	flexible	
Protection type	IP 65	

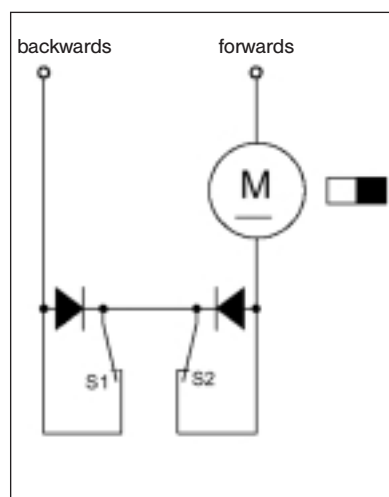
### Options

- Fasteners can be adjusted to 90° or 45°
- Clevis end on piston and/or housing end
- Bearing bracket for clevis end
- Pivot attachment
- Connecting cable with plug connectors
- RAL colour coating
- Encoder (available for the 230 V version), from 5 to 24 V DC, 6 impulses/mm

### Standard wiring diagrams



WS0800 / 230 V 1AC



GS0300 / 24V DC

S1 = Limit switch piston rod out

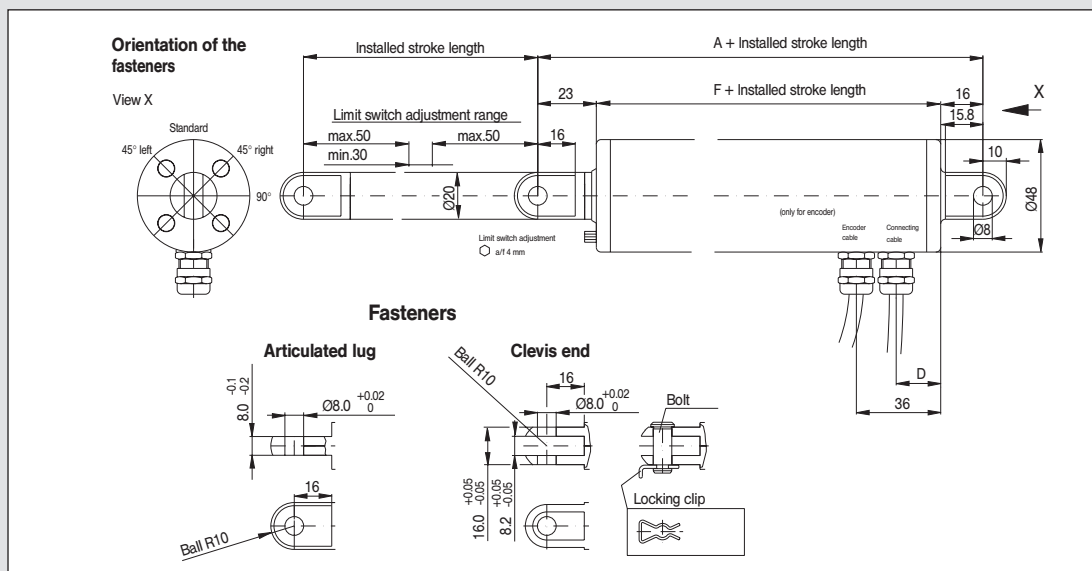
S2 = Limit switch piston rod in

C1 = Capacitor (internal)

Th = Thermal protection

# elero linear actuators

## Details



Installed stroke length	Dim.	230V 1AC 50Hz	24V DC
100 mm, 200 mm, 300 mm	A	430 mm	360 mm
	F	391 mm	321 mm
	D	19 mm	31 mm
400 mm, 500 mm, 600 mm	A	530 mm	460 mm
	F	491 mm	421 mm
	D	19 mm	31 mm

### elero GmbH

#### Linearantriebstechnik

Nassaeckerstrasse 11

D-07381 Poessneck

Phone +49 (0) 3647 / 46 07-0

Fax Reception +49 (0) 3647 / 46 07-40

Fax Purchasing department -41

Fax Sales department -42

Head office:

Linsenhofer Str. 59-63

D-72660 Beuren

Phone +49 (0) 70 25 / 13-02

Fax Reception +49 (0) 70 25 / 13-212

info@elero-linear.de

www.elero-linear.com