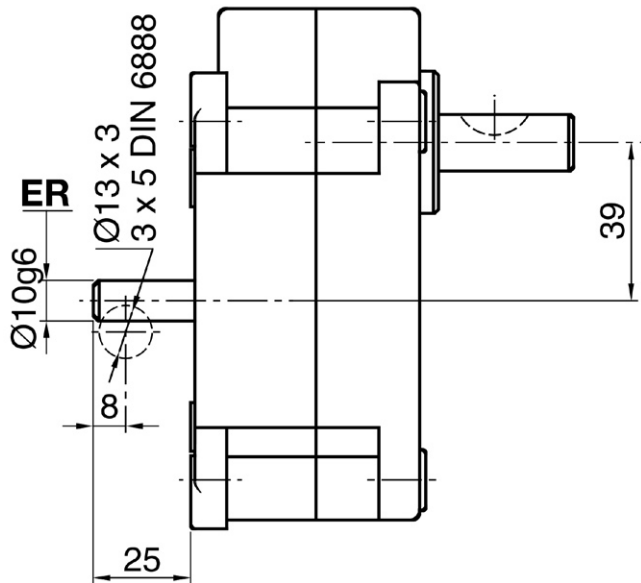





series **K200 ER-10** GEARBOX

25 Nm



TECHNICAL CHARACTERISTICS

- **ER-10 VERSION.** Incorporates a $\text{Ø}10$ mm. receiver input shaft turning on ball bearings, located at the opposite side of the output shaft. The shaft has a key hole for a 3 x 5 mm. curved key DIN 6888.

		
Reducción Ratio $i = X:1$	Nº Pasos Stages	Factor de par Torque factor
5,01	2	4,06
7,65	2	6,20
9,81	2	7,95
12,31	3	8,97
15,04	3	10,96
18,78	3	13,69
20,39	3	14,86
22,95	3	16,73
27,07	3	19,73
29,45	3	21,47
34,74	3	25,33
39,92	3	29,10
45,14	4	29,62
50,06	4	32,84
56,35	4	36,97
68,87	4	45,19
76,38	4	50,11
88,36	4	57,97
98,00	4	64,30
119,78	4	78,59
162,37	4	106,53
187,49	5	110,71
199,39	5	117,74
209,31	5	123,60
229,15	5	135,31
255,82	5	151,06
270,20	5	159,55
294,00	5	173,60
346,78	5	204,77
398,54	5	235,33