

Linear actuator Kompakt



*Our elegant
model with
compact design*



Linear actuators Kompakt



Description · Applications

The linear actuators of the Kompakt series are versatile push rod actuators with compact design used for

- locking devices for rolling doors
 - tilting devices
 - butterfly valve operation
 - operable windows
 - lifting platforms
- and many other applications

The facts

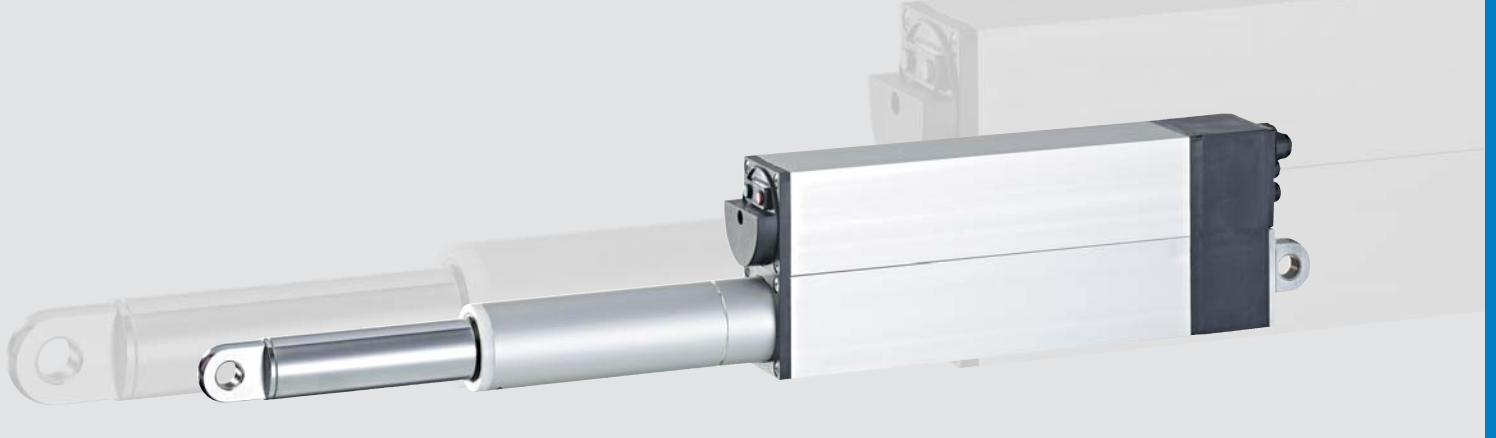
| | Kompakt |
|------------------------|--|
| Load (N) | 400-15,000 |
| Stroke speed (mm/s) | 1.5-65 |
| Stroke lengths (mm) | max. 1000 ⁽¹⁾ |
| Operating voltage | 400 V 3 AC or 24 V DC |
| Control voltage | 230 V 1 AC or 24 V DC |
| Temperature range (°C) | -10 to + 50 |
| Protection type | IP 54 |
| Piston rod | torsion-lock |
| Double scraper ring | at piston outlet |
| Limit switches | electronic |
| Design | extremely short thanks to special elero technology |

⁽¹⁾ At slower stroke speeds and longer stroke lengths, it is possible that, due to the rating, the entire stroke cannot be completed in one cycle.

Load (N) and stroke speeds (mm/s)

| Version | 400 V three-phase 50 Hz Rating: S3/15% | | | 24 V DC Rating: S3/15% | | | 24 V DC Rating: S1 | | | Number of add. planetary gear stages | Available with brake only |
|---------|---|----------|---------------------|---------------------------|----------|---------------------|-----------------------|----------|---------------------|--------------------------------------|---------------------------|
| | Stroke speed (mm/s) | Load (N) | Nominal current (A) | Stroke speed (mm/s) | Load (N) | Nominal current (A) | Stroke speed (mm/s) | Load (N) | Nominal current (A) | | |
| A | 65 | 1,000 | 1.3 | 55 | 700 | 10 | - | - | - | - | x |
| B | 45 | 1,500 | 1.3 | 35 | 1,000 | 10 | - | - | - | - | x |
| C | 17 | 4,000 | 1.3 | 17 | 1,500 | 10 | 22 | 400 | 5 | - | x |
| D | 12 | 7,000 | 1.3 | 12 | 2,600 | 10 | 15 | 1,000 | 5 | - | x |
| E | 7 | 12,000 | 1.3 | 7 | 5,500 | 10 | 9.5 | 1,800 | 5 | - | - |
| F | 5.5 | 15,000 | 1.3 | 4.5 | 8,000 | 10 | 5.5 | 2,500 | 5 | 1 | - |
| G | 4 | 15,000 | 1.3 | 3 | 11,000 | 10 | 4 | 4,500 | 5 | 1 | - |
| H | 2 | 15,000 | 1.3 | 2 | 15,000 | 8 | 2.5 | 8,500 | 5 | 1 | - |
| I | 1.6 | 15,000 | 1.3 | 1.5 | 15,000 | 5 | 1.5 | 15,000 | 5 | 1 | - |

Note: All technical data represent average values and are based on an ambient temperature of 20 °C. Stroke speeds of direct current motors are load and temperature dependent.



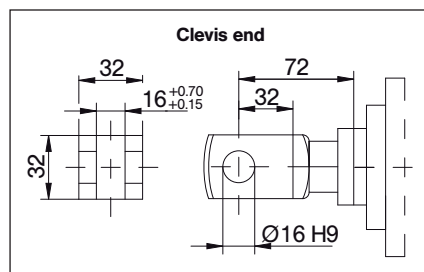
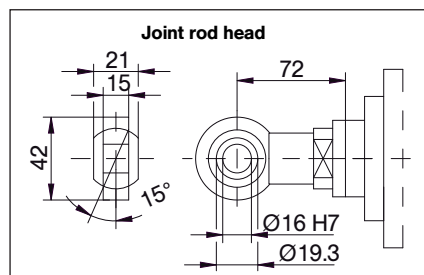
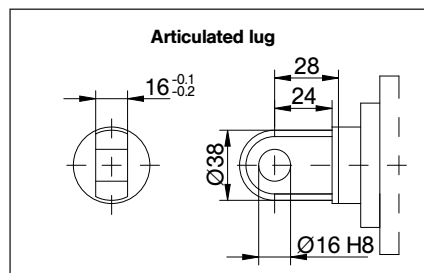
Options

- Analogue output 0-10 V
- Brake
- Standard fasteners
- Fasteners can be adjusted to 90°

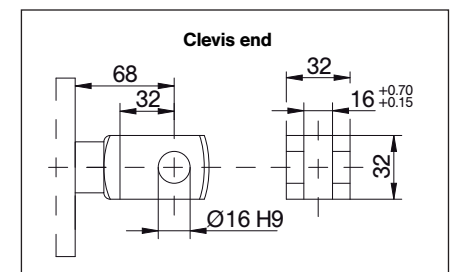
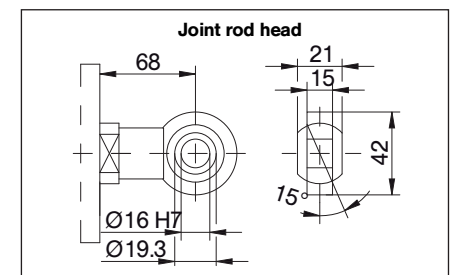
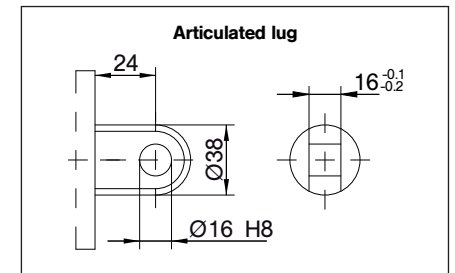
Other stroke lengths, special voltages, circuit variants, cable types as well as additional equipment (protective sleeve, recirculating ballscrew, plug connections, etc.) on request.

Fixing

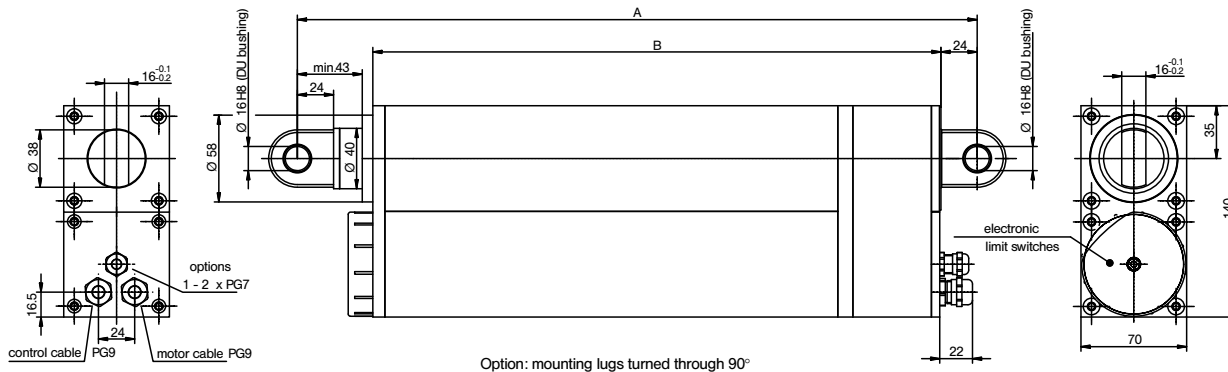
on piston end



on housing end



Technical data and dimensions



Dimension A

| Stroke length | Dimension A | |
|---------------|-------------|------|
| | min. | max. |
| 200 | 450* | 650* |
| 250 | 500 | 750 |
| 300 | 550 | 850 |
| 350 | 600 | 950 |
| 400 | 650 | 1050 |
| 450 | 700 | 1150 |
| 500 | 800 | 1300 |
| 600 | 900 | 1500 |
| 700 | 1000 | 1700 |
| 800 | 1100 | 1900 |
| 900 | 1200 | 2100 |
| 1000 | 1300 | 2300 |

Dimension A increases by

- + 44 mm with an attached clevis end/joint rod head
- + 75 mm with an attached spring-action articulated lug

*ATTENTION:

If the body dimension is 378 mm, dimension A increases by 50 mm.

Dimension B

| | |
|---|-----|
| Basic version | 376 |
| With additional planetary gear stage and (potentiometer or brake) | 378 |
| With brake and potentiometer | 378 |

elero GmbH

Linearantriebstechnik

Nassaeckerstrasse 11

D-07381 Poessneck

Phone +49 (0) 3647 / 46 07-0

Fax Reception +49 (0) 3647 / 46 07-40

Fax Purchasing department -41

Fax Sales department -42

Head office:

Linsenhofer Str. 59-63

D-72660 Beuren

Phone +49 (0) 70 25 / 13-02

Fax Reception +49 (0) 70 25 / 13-212

info@elero-linear.de

www.elero-linear.com