

Linear actuator Picolo 0



Description • Applications • Options

Characteristics

- Direct current drive
- Waterproof housing and fixing elements made of anodised aluminium or stainless steel 1.4571
- Integrated limit switches
- Central cable outlet
- Optional synchronisation control for synchronous operation of two linear actuators

Applications

- Façade architecture
- Adjustment of louvres and photovoltaic panels
- Window adjustment
- Maritime applications
- Swimming pools
- Greenhouses
- Louvre windows
- “Cabrio roofs” (flexible roofing systems for patios and winter gardens, with large-format slats made of glass, aluminum or stainless steel)
- Ventilation systems

Options

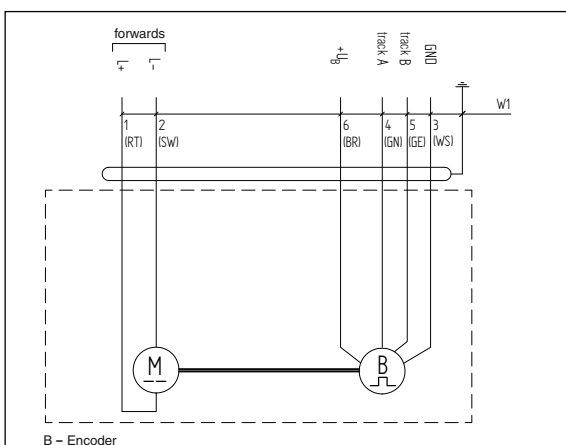
- Encoder
- Synchronisation control
- Connecting cable with plug connectors
- RAL colour coating

Accessories

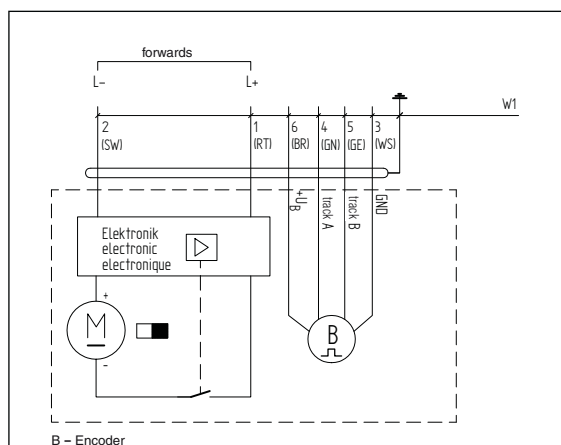
- Adjustable pivot
- Synchronous control unit
- Bearing brackets

Attachment options

- Articulated lug (standard)
- Clevis end
- Adjustable articulated lug (on piston end)
- Joint rod head (on piston end)



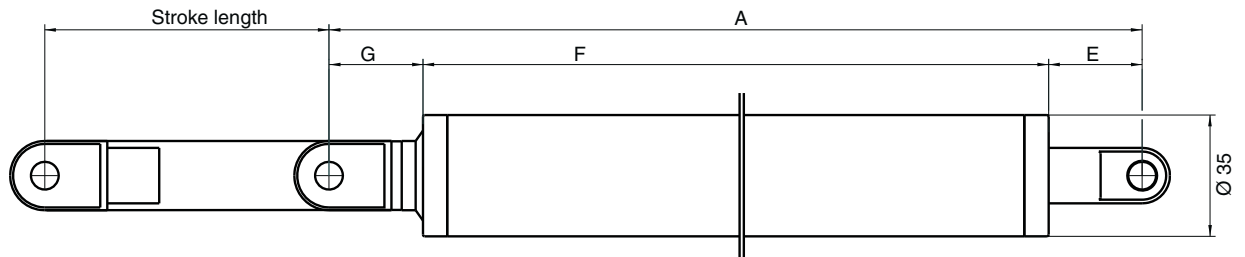
GS9603 (Encoder without limit switch and synchronisation control)



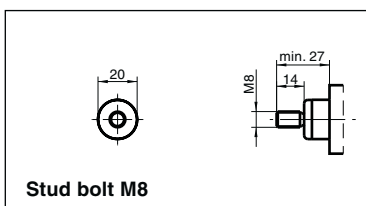
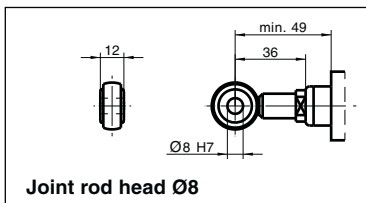
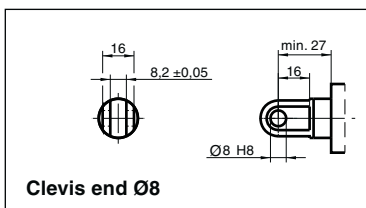
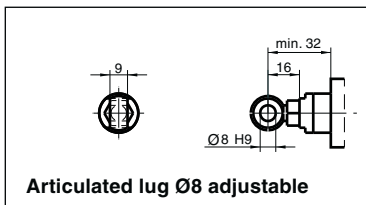
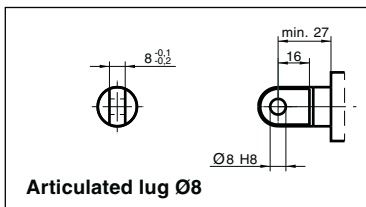
GS9312 (Encoder with limit switch)

Technical data and dimensions

Piccolo 0



Mounting fixtures – piston side Dim. G



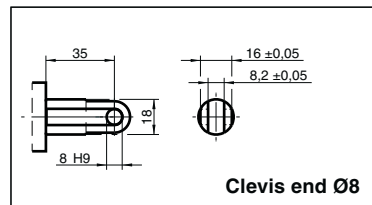
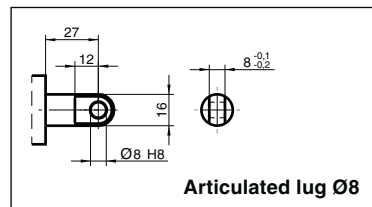
Dimensions

Stroke length (mm)	Dimension F (mm)
75	349
100	374
150	424
200	474
250	524
300	574
400	674
600*	909
800*	1,109

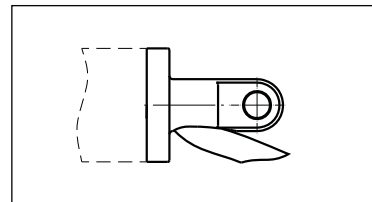
* Max. load is 900N when stroke 600 mm or 800 mm is selected

Dim. A = G + F + E (mm)

Mounting fixtures – housing end Dim. E



Functional diagram Central cable outlet



Load (N) and stroke speed (mm/s)

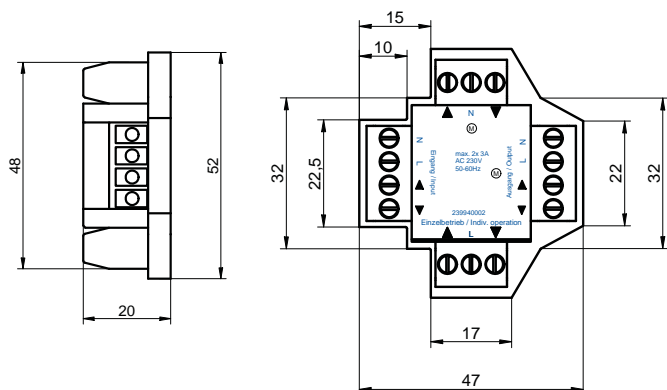
Version	Load (N)	Stroke speed (mm/s)	No. of pulses*
A	100	16	13.5
B	400	9	13.5
C	900	4.5	24
D	1,800	2	60.75

* For option: Encoder

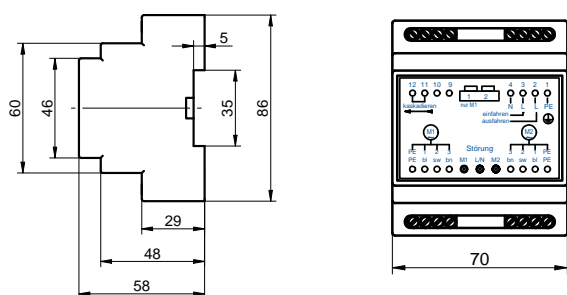
Electrical accessories Picolo 0 / Picolo XL



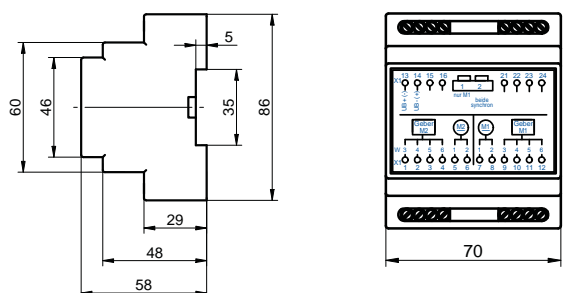
Central control unit for 1 or 2 AC drivers
Art. No. 239940002



Picolo XL fail-safe monitor
Art. No. 752232302



Picolo 0 synchronous control system
Art. No. see table

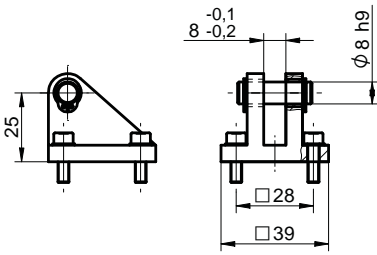


Picolo 0 synchronous control system		
Version	12V DC	24V DC
A	756176301	755084001
B	756176401	755083901
CD	756176501	754335301

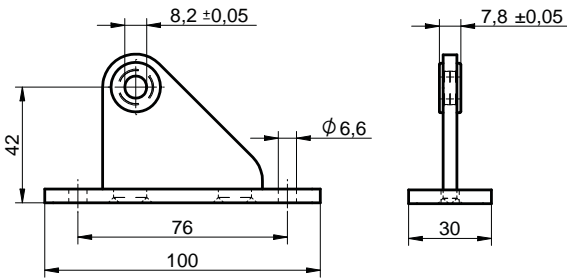
Mounting accessories Picolo 0 / Picolo XL



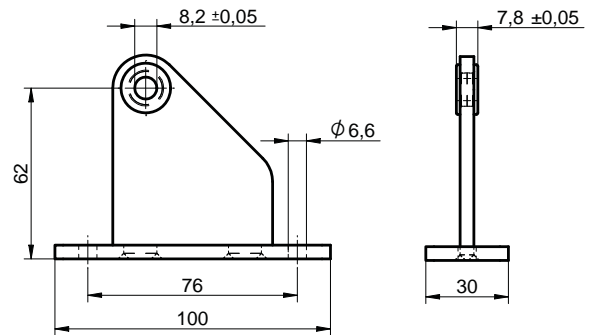
**Bearing bracket 25 mm – Art. No. 724670101
for articulated lug**



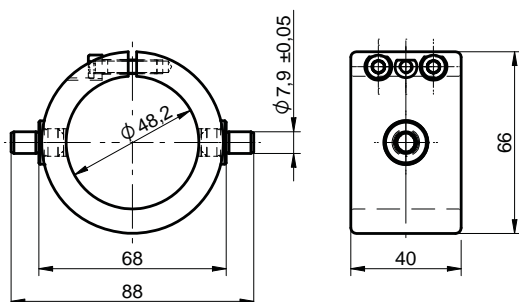
**Bearing bracket 42 mm – Art. No. 750364001
for clevis end**



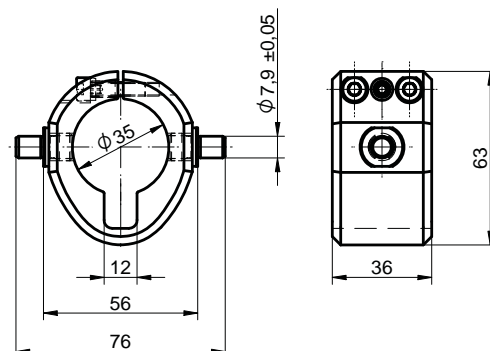
**Bearing bracket 62 mm – Art. No. 750323401
for clevis end**



**Picolo XL pivot mounting fixture – Art. No. 750440901
tension ring fixed on actuator housing per bolt**



**Picolo 0 pivot mounting fixture – Art. No. 754068901
tension ring fixed on actuator housing per bolt**



elero linear actuators



Subject to change. EN-2011557/0113

elero GmbH **Linearantriebstechnik**

Technical/Sales

Nassaeckerstrasse 11
07381 Poessneck / Germany
T +49 3647 4607-0
F +49 3647 4607-42

Order processing

Linsenhofer Strasse 65
72660 Beuren / Germany
T +49 7025 13-02
F +49 7025 13-212

info@elero-linear.de
www.elero-linear.com

Please find further technical information on
our website in the category **Service/Instructions**.