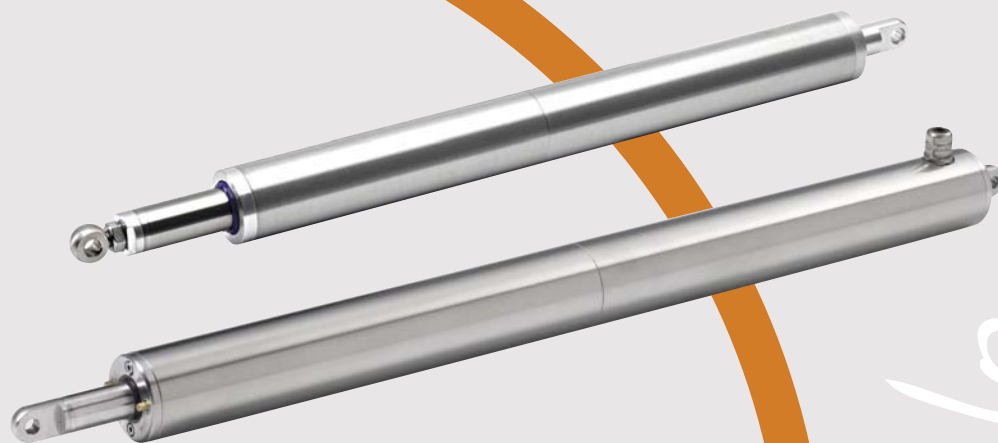


Linear actuator Picolo



*Our innovative design models
with flexible mounting options*



Picolo

made in
GERMANY

Linear actuator Picolo



Picolo for the latest demands of architects and façade designers

elero's space-saving linear actuator with innovative design for the adjustment of photovoltaic louvers and large louvers made of glass, aluminium or stainless steel for commercial architecture.

Picolo's aesthetic design

Through the slim and cylindrical design, technical and functional aspects as well as optical and aesthetic aspects have been taken into account. The flexible mounting position offers numerous application possibilities, no matter if the piston rod is installed horizontally or facing upwards.

Picolo has a lot of advantages

- Thanks to weather-resistant construction, the mounting position is flexible
- Easy control
- Low-noise operation
- UV-resistant cables

Picolo is weather-resistant

With waterproof housing and weather-resistant fixing elements, Picolo is an optimum solution for outdoor applications.

The technology

elero's Picolo linear actuator is an electromechanical push-rod drive in which a rotational movement is transformed into a linear movement by gear units and a threaded spindle.

- Protection against solar heat
- Well-lit rooms through controlled daylighting
- Interior glare protection
- Optimum lighting conditions for PC work environments

The facts

	Picolo XL / XL-P		Picolo 0	
Operating voltage	230V 1AC, 50Hz		24V DC	
Stroke speed (mm/s)	ca. 20	ca. 6	ca. 5	
Load (N)	400	1,200		100 – 1,800
Rating	KB 5 min		S3 15%	
Housing diameter (mm)	48		35	
Stroke lengths (mm)	100, 200, 300, 400, 500, 600		75 – 400 (lug-lug mounting) 75 – 800 (pivot mounting)	
Temperature range (°C)	-20 bis +80			
Cable length (m)	2			
Housing + fixing elements	stainless steel 1.4301		stainless steel 1.4571	anodised aluminium
Mounting positions	flexible			
Protection type (IP)	65		67	

Please find further technical information on www.elero-linear.com in the category Service/Instructions.

Linear actuator Picolo XL



Description • Applications • Options

Characteristics

- Waterproof housing of stainless steel
- Integrated, easily adjustable limit switches
- Torsion lock piston
- For the 230V AC model: Integrated capacitor and an asynchronous motor, which is particularly robust and its speed is constant even if the load fluctuates.

Applications

- Façade architecture
- Adjustment of louvres and photovoltaic panels
- Window adjustment
- Ventilation systems

Options

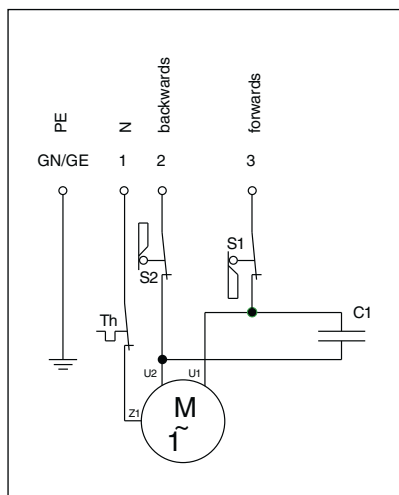
- Fixing elements can be delivered 90° or 45° rotated
- Clevis end on piston and/or housing end
- Bearing bracket for clevis end
- Pivot attachment
- Connecting cable with plug connectors
- RAL colour coating
- Encoder (available for the 230V version), from 5 to 24V DC, 6 pulses/mm

Accessories

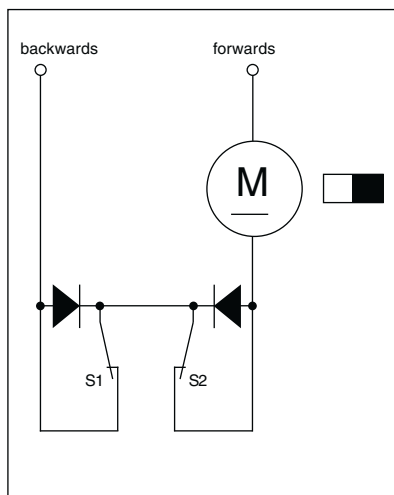
- Adjustable pivot
- Fail-safe monitor
- Bearing brackets

Attachment options

- Articulated lug (standard)
- Clevis end
- Articulated lug (90° rotated)
- Clevis end (90° rotated)



WS0800/230V 1AC



GS0300/24V DC

- S1 = Limit switch
piston rod out
- S2 = Limit switch
piston rod in
- C1 = Capacitor (internal)
- Th = Thermal protection

Linear actuator Picolo XL-P



Description • Applications • Options

Characteristics

- Integrated isolation relays enabling parallel connection of several actuators
- Weather-resistant 230V linear actuator made of stainless steel
- Additional isolation relays are not required
- Reduced installation expenditure and higher security against incorrect use
- Control of several linear actuators in parallel (without synchronisation)

Applications

- Façade architecture
- Adjustment of louvres and photovoltaic panels
- Window adjustment
- Ventilation systems

Options

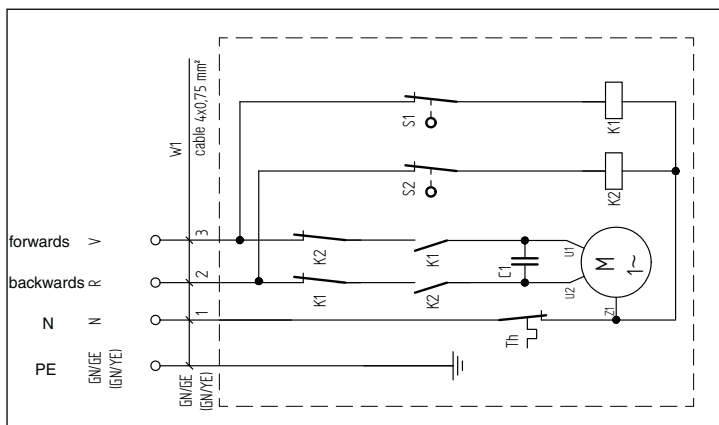
- Fixing elements can be delivered 90° or 45° rotated
- Clevis end on piston and/or housing end
- Bearing bracket for clevis end
- Pivot attachment
- Connecting cable with plug connectors
- RAL colour coating

Accessories

- Adjustable pivot
- Bearing brackets

Attachment options

- Articulated lug (standard)
- Clevis end
- Articulated lug (90° rotated)
- Clevis end (90° rotated)



S1 = Limit switch
piston rod out

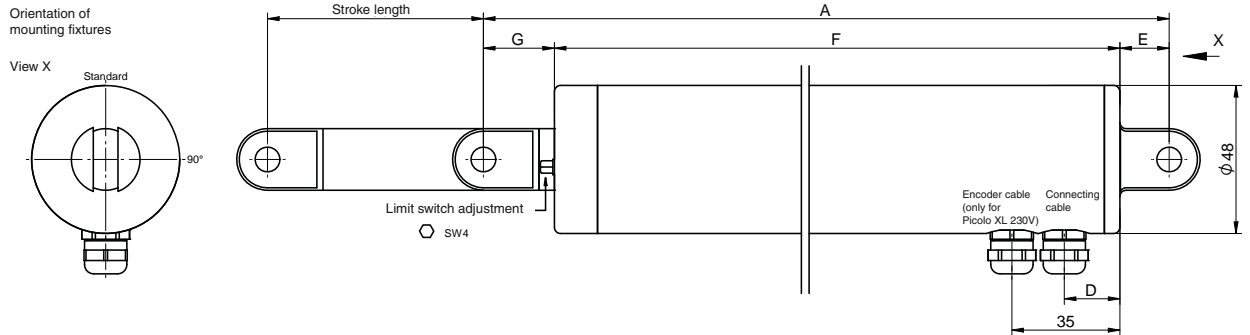
S2 = Limit switch
piston rod in

C1 = Capacitor (internal)

Th = Thermal protection

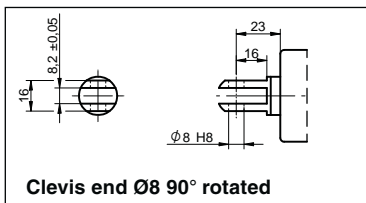
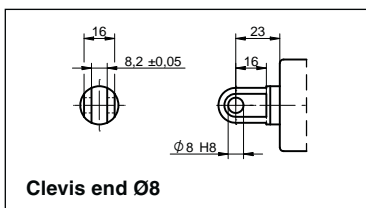
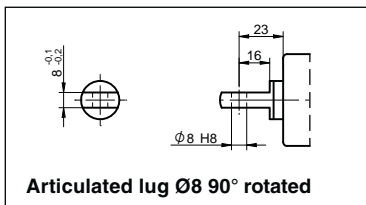
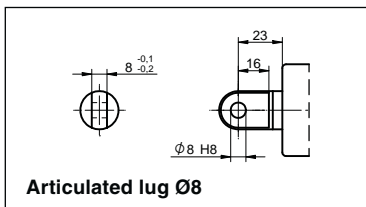
WS9820 (for parallel connection)

Technical data and dimensions Piccolo XL / XL-P



Mounting fixtures – piston side

Dim. G



Dimensions

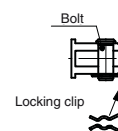
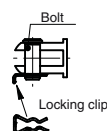
Stroke length (mm)	Dimension F (mm)		
	230V 1AC, 50 Hz		24V DC
	Piccolo XL	Piccolo XL-P	Piccolo XL
100	491	526	421
200	591	626	521
300	691	726	621
400	891	926	821
500	991	1,026	921
600	1,091	1,126	1,021

Dim. A = G + F + E (mm)

Position of connecting cable

Dim. D

Dimension D (mm)		
230V 1AC, 50 Hz		24V DC
Piccolo XL	Piccolo XL-P	Piccolo XL
18	30	30



Mounting fixtures – housing end

Dim. E

