

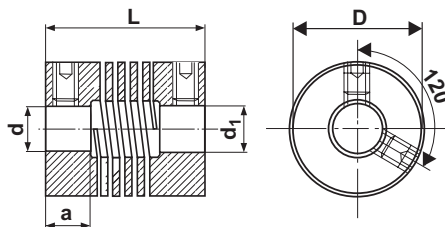
AXELKOPPLINGAR

Spiralkoppling med stoppskruv

Material

Aluminium

Max varvtal 8000 min⁻¹



| Artikelnr | D | L | a | Skriv dim DIN916 | ** Ncm | Vikt g | Max axiell förskjutning | Max vinkel- avvikelse | Max radiell förskjutning | Mv max Ncm | d H8 | d ₁ H8 |
|-----------|----|----|----|---------------------|-----------|-----------|----------------------------|--------------------------|-----------------------------|---------------|---------|----------------------|
| SKS100202 | 10 | 15 | 4 | M2* | 15 | 2,4 | ±0,20 | ±2,0° | ±0,15 | 15 | 2 | 2 |
| SKS100303 | 10 | 15 | 4 | M2* | 15 | 2,4 | ±0,20 | ±2,0° | ±0,15 | 15 | 3 | 3 |
| SKS120303 | 12 | 18 | 5 | M2,5 | 35 | 4,0 | ±0,25 | ±2,5° | ±0,15 | 25 | 3 | 3 |
| SKS120404 | 12 | 18 | 5 | M2,5 | 35 | 4,0 | ±0,25 | ±2,5° | ±0,15 | 25 | 4 | 4 |
| SKS160303 | 16 | 22 | 6 | M3 | 50 | 9,5 | ±0,30 | ±3,0° | ±0,20 | 40 | 3 | 3 |
| SKS160404 | 16 | 22 | 6 | M3 | 50 | 9,5 | ±0,30 | ±3,0° | ±0,20 | 40 | 4 | 4 |
| SKS160505 | 16 | 22 | 6 | M3 | 50 | 9,5 | ±0,30 | ±3,0° | ±0,20 | 40 | 5 | 5 |
| SKS190404 | 19 | 22 | 6 | M3 | 50 | 13,0 | ±0,40 | ±3,5° | ±0,25 | 60 | 4 | 4 |
| SKS190606 | 19 | 22 | 6 | M3 | 50 | 13,0 | ±0,40 | ±3,5° | ±0,25 | 60 | 6 | 6 |
| SKS190808 | 19 | 22 | 6 | M3 | 50 | 13,0 | ±0,40 | ±3,5° | ±0,25 | 60 | 8 | 8 |
| SKS250606 | 25 | 24 | 6 | M4 | 120 | 26,0 | ±0,50 | ±4,0° | ±0,30 | 100 | 6 | 6 |
| SKS250808 | 25 | 24 | 6 | M4 | 120 | 26,0 | ±0,50 | ±4,0° | ±0,30 | 100 | 8 | 8 |
| SKS251010 | 25 | 24 | 6 | M4 | 120 | 26,0 | ±0,50 | ±4,0° | ±0,30 | 100 | 10 | 10 |
| SKS251212 | 25 | 24 | 6 | M4 | 120 | 26,0 | ±0,50 | ±4,0° | ±0,30 | 100 | 12 | 12 |
| SKS320808 | 32 | 45 | 14 | M6 | 720 | 70,0 | ±0,25 | ±3,0° | ±0,38 | 730 | 8 | 8 |
| SKS321010 | 32 | 45 | 14 | M6 | 720 | 70,0 | ±0,25 | ±3,0° | ±0,38 | 630 | 10 | 10 |
| SKS321212 | 32 | 45 | 14 | M6 | 720 | 70,0 | ±0,25 | ±3,0° | ±0,38 | 510 | 12 | 12 |
| SKS321414 | 32 | 45 | 14 | M6 | 720 | 70,0 | ±0,25 | ±3,0° | ±0,38 | 470 | 14 | 14 |
| SKS381010 | 38 | 57 | 16 | M6 | 720 | 160,0 | ±0,38 | ±3,0° | ±0,76 | 1350 | 10 | 10 |
| SKS381212 | 38 | 57 | 16 | M6 | 720 | 160,0 | ±0,38 | ±3,0° | ±0,76 | 1240 | 12 | 12 |
| SKS381414 | 38 | 57 | 16 | M6 | 720 | 160,0 | ±0,38 | ±3,0° | ±0,76 | 1240 | 14 | 14 |
| SKS381616 | 38 | 57 | 16 | M6 | 720 | 160,0 | ±0,38 | ±3,0° | ±0,76 | 1070 | 16 | 16 |

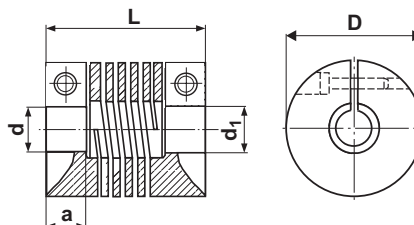
Rostfritt på förfrågan. *Endast en stoppskruv. **Max åtdragnings moment.

Spiralkoppling med klämfläns

Material

Aluminium

Max varvtal 6000 min⁻¹



| Artikelnr | D | L | a | Skriv dim DIN912 | ** Ncm | Vikt g | Max axiell förskjutning | Max vinkel- avvikelse | Max radiell förskjutning | Mv max Ncm | d H8 | d ₁ H8 |
|-----------|----|----|------|---------------------|-----------|-----------|----------------------------|--------------------------|-----------------------------|---------------|---------|----------------------|
| SKK140202 | 14 | 21 | 5,0 | M2 | 50 | 6,5 | ±0,25 | ±3,0° | ±0,20 | 50 | 2 | 2 |
| SKK140303 | 14 | 21 | 5,0 | M2 | 50 | 6,5 | ±0,25 | ±3,0° | ±0,20 | 50 | 3 | 3 |
| SKK140404 | 14 | 21 | 5,0 | M2 | 50 | 6,5 | ±0,25 | ±3,0° | ±0,20 | 50 | 4 | 4 |
| SKK160303 | 16 | 25 | 6,0 | M2 | 50 | 10,0 | ±0,30 | ±3,5° | ±0,20 | 60 | 3 | 3 |
| SKK160404 | 16 | 25 | 6,0 | M2 | 50 | 10,0 | ±0,30 | ±3,5° | ±0,20 | 60 | 4 | 4 |
| SKK160505 | 16 | 25 | 6,0 | M2 | 50 | 10,0 | ±0,30 | ±3,5° | ±0,20 | 60 | 5 | 5 |
| SKK190404 | 19 | 28 | 6,5 | M3 | 80 | 16,0 | ±0,40 | ±4,0° | ±0,25 | 80 | 4 | 4 |
| SKK190505 | 19 | 28 | 6,5 | M3 | 80 | 16,0 | ±0,40 | ±4,0° | ±0,25 | 80 | 5 | 5 |
| SKK190606 | 19 | 28 | 6,5 | M3 | 80 | 16,0 | ±0,40 | ±4,0° | ±0,25 | 80 | 6 | 6 |
| SKK250606 | 25 | 32 | 8,0 | M3 | 100 | 34,0 | ±0,50 | ±4,0° | ±0,35 | 120 | 6 | 6 |
| SKK250808 | 25 | 32 | 8,0 | M3 | 100 | 34,0 | ±0,50 | ±4,0° | ±0,35 | 120 | 8 | 8 |
| SKK251010 | 25 | 32 | 8,0 | M3 | 100 | 34,0 | ±0,50 | ±4,0° | ±0,35 | 120 | 10 | 10 |
| SKK320808 | 32 | 45 | 14,0 | M5 | 950 | 70,0 | ±0,25 | ±3,0° | ±0,38 | 730 | 8 | 8 |
| SKK321010 | 32 | 45 | 14,0 | M5 | 950 | 72,0 | ±0,25 | ±3,0° | ±0,38 | 630 | 10 | 10 |
| SKK321212 | 32 | 45 | 14,0 | M5 | 950 | 70,0 | ±0,25 | ±3,0° | ±0,38 | 510 | 12 | 12 |
| SKK321414 | 32 | 45 | 14,0 | M5 | 950 | 68,0 | ±0,25 | ±3,0° | ±0,38 | 470 | 14 | 14 |
| SKK381010 | 38 | 57 | 13,0 | M6 | 1200 | 160,0 | ±0,38 | ±3,0° | ±0,76 | 1350 | 10 | 10 |
| SKK381212 | 38 | 57 | 13,0 | M6 | 1200 | 160,0 | ±0,38 | ±3,0° | ±0,76 | 1240 | 12 | 12 |
| SKK381414 | 38 | 57 | 13,0 | M6 | 1200 | 160,0 | ±0,38 | ±3,0° | ±0,76 | 1240 | 14 | 14 |
| SKK381616 | 38 | 57 | 13,0 | M6 | 1200 | 160,0 | ±0,38 | ±3,0° | ±0,76 | 1070 | 16 | 16 |

Rostfritt på förfrågan. **Max åtdragnings moment.