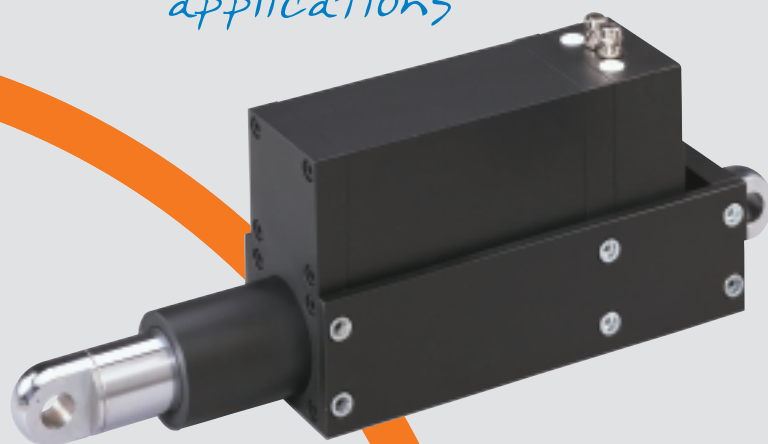


# Linear actuator Vario



*Our most powerful model  
for heavy-duty  
applications*



# Linear actuators Vario 1 and 2



## Description · Applications · Options

### The linear actuators of the Vario series have the following outstanding features:

- Combination of high performance and low space requirement
- Robust construction
- High static load capacity
- Flexible concept thanks to a versatile modular system
- Minimum maintenance required
- Optimum protection against dirt, dust and other environmental influences
- Precise positioning thanks to electronic switches for two end positions and one intermediate position; optional output of a stroke-dependent analogue signal

### Applications

- Special machine construction
- Materials handling technology
- Overhead catenary construction
- Shipbuilding
- Communications engineering

### The facts

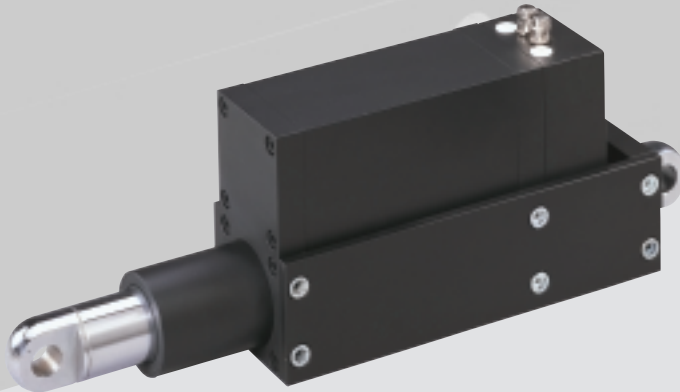
	Vario 1	Vario 2
Load (kN)	50	100
Stroke speed (mm/s)	1-70	
Stroke length (mm)	max. 800	max. 1000
Operating voltage	400 V/3 AC, 50 Hz	400 V/3 AC, 50 Hz
Control voltage electronic limit switches	24 V DC or 230 V AC	
Voltage supply analogue output	24 V DC / 20 mA	
Temperature range (°C)	-10 to +50	
Protection type	IP 54	
Piston rod	torsion-lock	
Double scraper ring	at piston outlet	
Housing	black coating	
Cable length (m)	1.5	

### Options

- Brake
- Analogue output for a stroke-dependent tension signal (0...10V)
- Encoder
- DIN 71752 clevis end
- DIN 648 swivel eye
- Threaded bolt M20x38

Other stroke lengths, special voltages, circuit variants, cable types, special coatings as well as additional equipment (protective sleeve, plug connections, etc.) on request.

# Our most powerful models



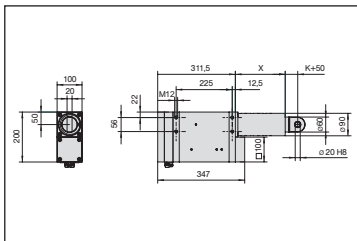
Vario 1

## Load (N) and stroke speeds (mm/s)

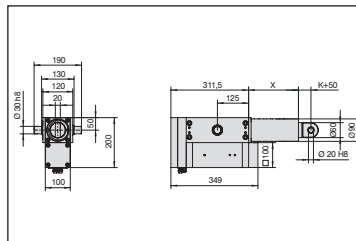
Version	400 V-3 AC Rating: S3 15% Pushing/ pulling force (kN)	Stroke speed (mm/s)	Spindle dimensions	Prescribed brake	Current consumption (A)	Power (VA)
A	10	70	KGT 32x10	yes	3	2100
B	15	50	KGT 32x10	yes	3	2100
C	4	50	Tr 40x7	yes	3	2100
D	8	30	Tr 40x7	yes	3	2100
E	15	20	Tr 40x7	yes	3	2100
F	30	10	Tr 40x7	no	3	2100
G	40	6	Tr 40x7	no	3	2100
H	50	3	Tr 40x7	no	1.7	1200
I	40	1	Tr 40x7	no	1.7	1200

All technical data represent average values and are based on an ambient temperature of 20°C.

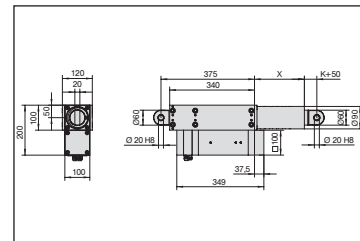
## Mounting types Vario 1



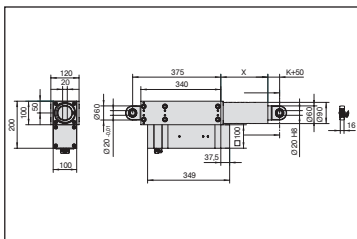
Threaded holes / Lug



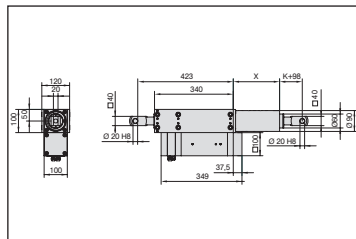
Pivot / Lug



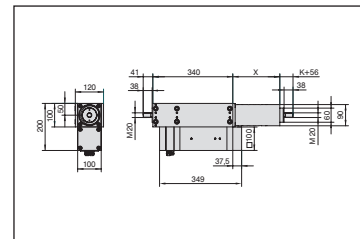
Lug / Lug



Swivel eye / Swivel eye

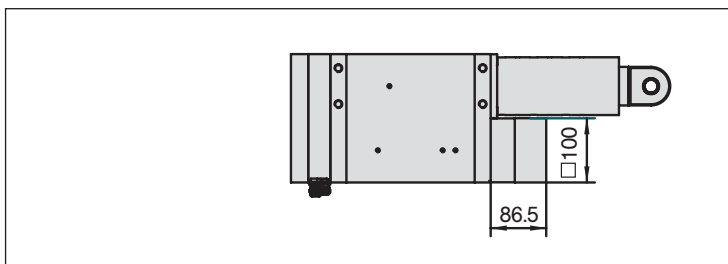


Clevis end / Clevis end

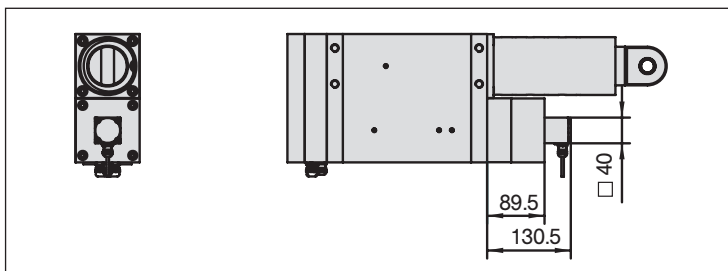


Threaded bolt / Threaded bolt

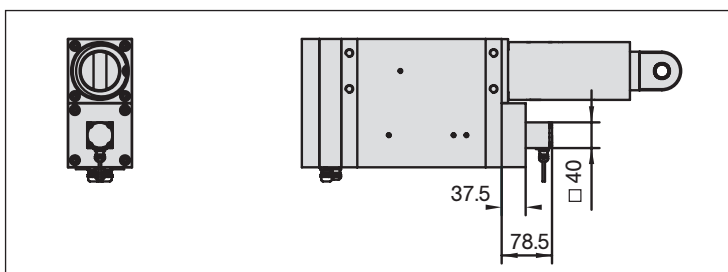
## Options Vario 1



Version with brake



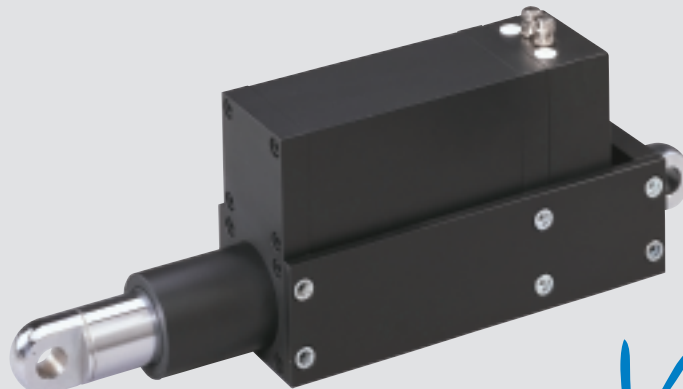
Version with brake and encoder



Version with encoder

Stroke length (mm)	200	400	600	800
Dimension X (mm)	200	400	650	850

Version	A	B	C	D	E	F	G	H	I
Dimension K (mm)	15	15	0	0	0	0	0	0	0



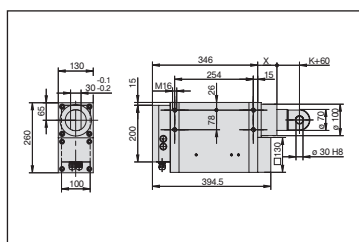
Vario 2

## Load (N) and stroke speeds (mm/s)

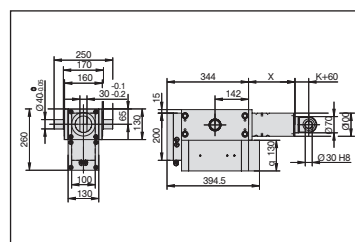
Version	400 V-3 AC Rating: S3 15% Pushing/ pulling force (kN)	Stroke speed (mm/s)	Spindle dimensions	Prescribed brake	Current consumption (A)	Power (VA)
A	20	70	KGT 40x10	yes	6	4160
B	45	35	KGT 40x10	yes	6	4160
C	10	55	Tr 50x8	yes	6	4160
D	16	30	Tr 50x8	yes	6	4160
E	30	20	Tr 50x8	yes	6	4160
F	60	10	Tr 50x8	yes	6	4160
G	100	5	Tr 50x8	yes	6	4160
H	100	2	Tr 50x8	yes	3	2080
I	100	1	Tr 50x8	yes	2.5	1730

All technical data represent average values and are based on an ambient temperature of 20°C.

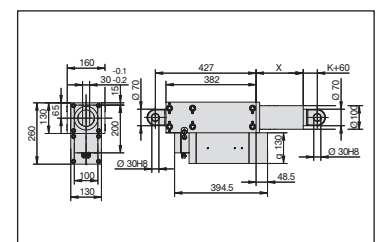
## Mounting types Vario 2



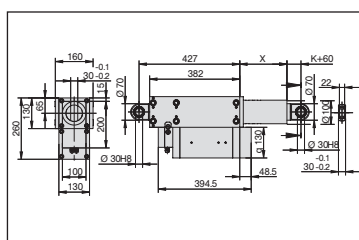
Threaded holes / Lug



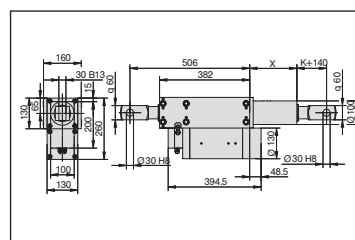
Pivot / Lug



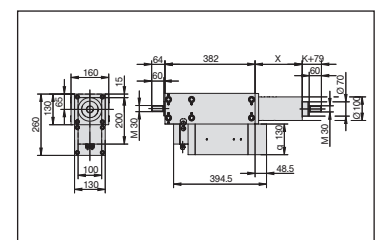
Lug / Lug



Swivel eye / Swivel eye



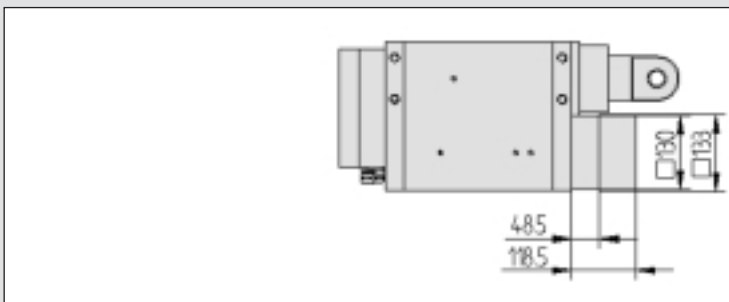
Clevis end / Clevis end



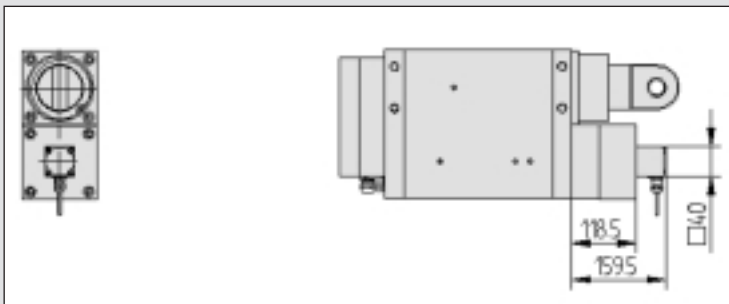
Threaded bolt / Threaded bolt

# Vario 2

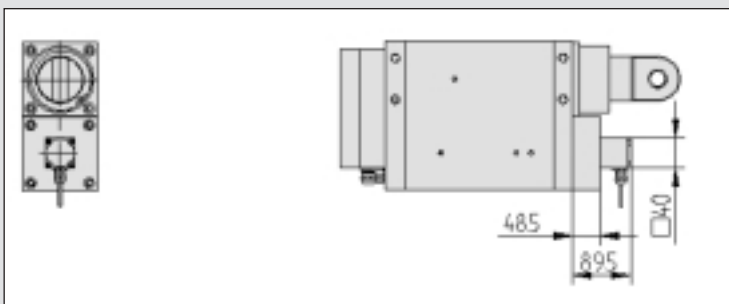
## Options Vario 2



Version with brake



Version with brake and encoder



Version with encoder

Stroke length (mm)	200	400	600	800
Dimension X (mm)	200	400	700	900

Version	A	B	C	D	E	F	G	H	I
Dimension K (mm)	15	15	0	0	0	0	0	0	0

### elero GmbH Linearantriebstechnik

Nassaeckerstrasse 11  
D-07381 Poesneck

Phone +49 (0) 3647 / 46 07-0

Fax Reception +49 (0) 3647 / 46 07-40

Fax Purchasing department -41

Fax Sales department -42

Head office:

Linsenhofer Str. 59-63

D-72660 Beuren

Phone +49 (0) 70 25 / 13-02

Fax Reception +49 (0) 70 25 / 13-212

info@elero-linear.de

www.elero-linear.com